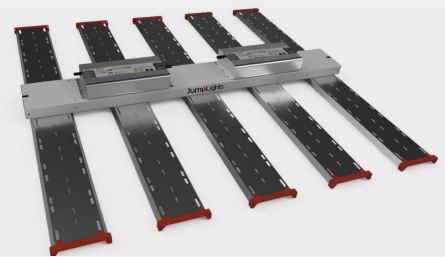




The BudKicker™-GIP is a variable spectrum high intensity Over-Canopy grow light. It has more available light to accelerate growth and can optimize the light spectrum throughout the plants' life cycle.

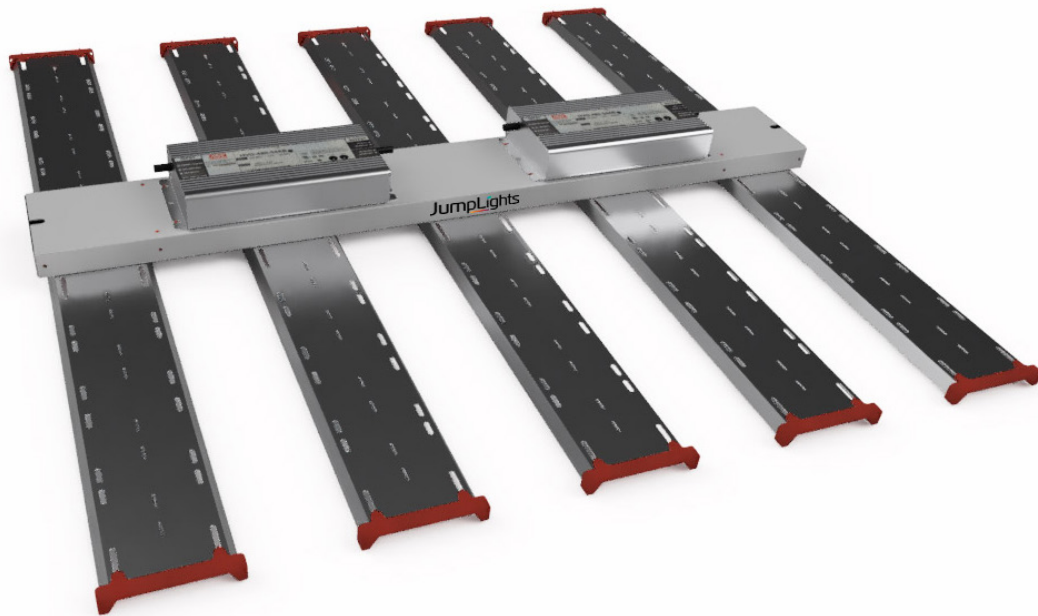
Spectral control ranges from low light intensity and a blue-heavy full spectrum, to high light intensity with a red-heavy full spectrum, and finally to the highest light intensity with a balanced red and blue full spectrum. This allows the plant to stay compact during vegetative growth and in early stages of flowering when minimizing stretch is important. Pair the BudKicker™-GIP with the SpectroTouch™ controller for easy presets like: Seedling, Veg1, Veg2, Flower, Flush, and Full.

By providing more light output and spectral control compared to HPS or other LED grow lighting products, BudKicker™-GIP enables growers to produce substantially more grams per square foot of premium flower. This safe, UL 8800 Certified, wet-rated light is made in America and carries a 5-year warranty. It's easy to install and drives plants to produce their best.



Features/Benefits

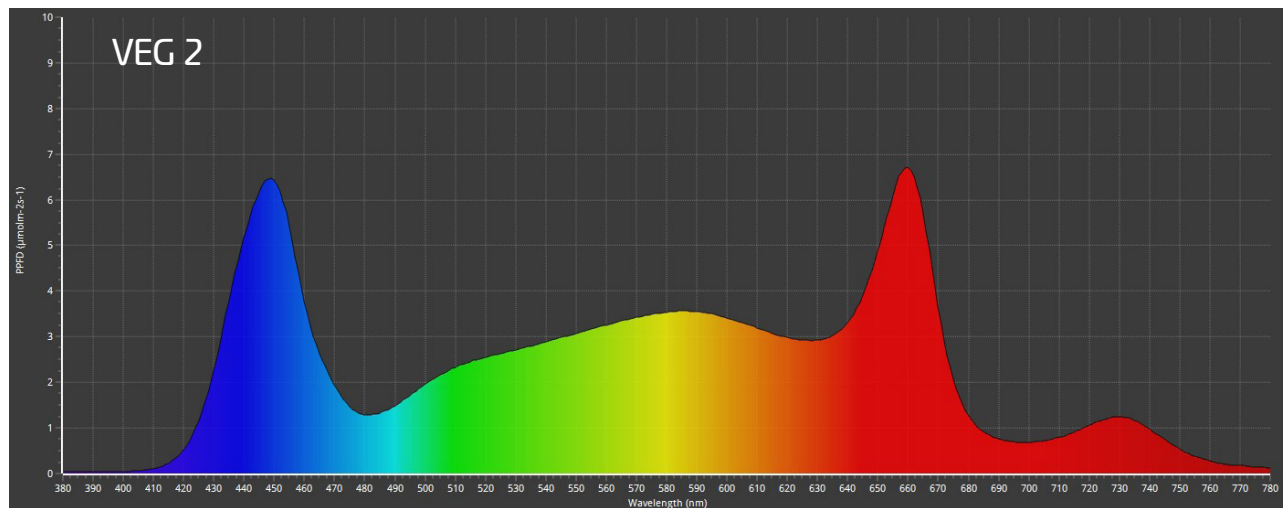
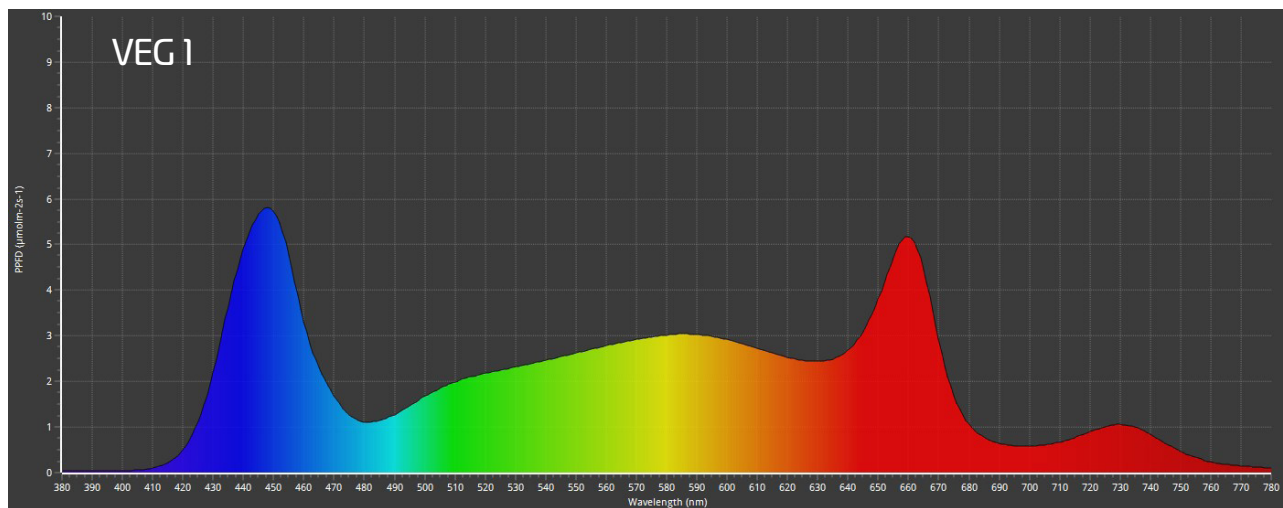
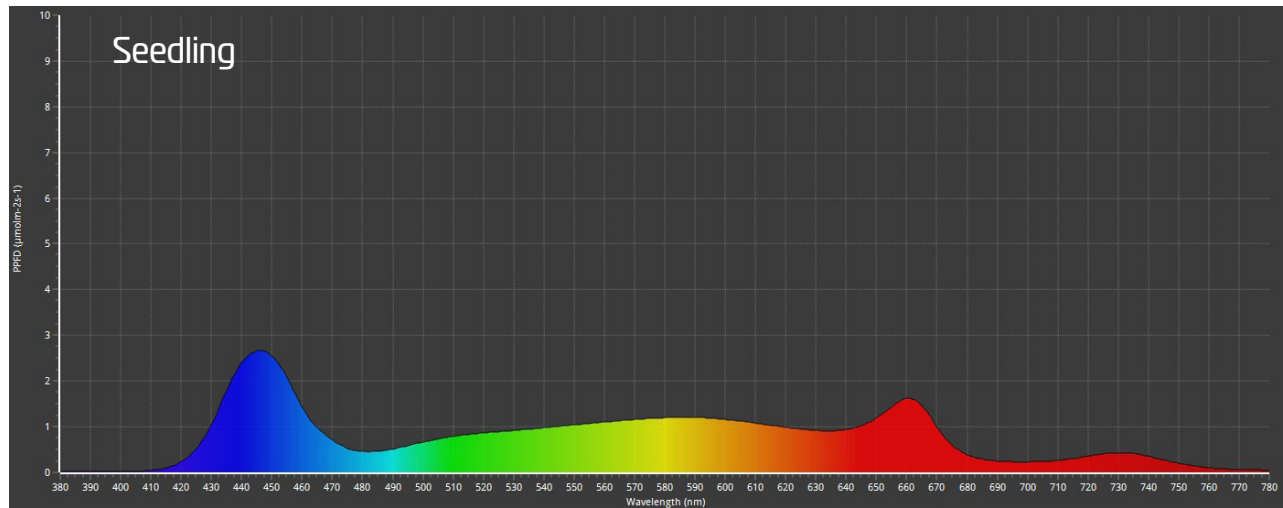
- Substantially improves output and quality in grow-in-place applications by optimizing spectrum throughout the plants' lifecycle.
- Uses enhanced Emerson-effect by emitting Far-Red light to boost spectral synergy.
- Massive light output and variable spectrum light creating the ultimate growth environment for output and product quality.
- Exceptional Efficacy in patent-pending design.
- Total Flux up to 2,536 $\mu\text{mol}\cdot\text{s}^{-1}$
- 5-year warranty, Made in the USA



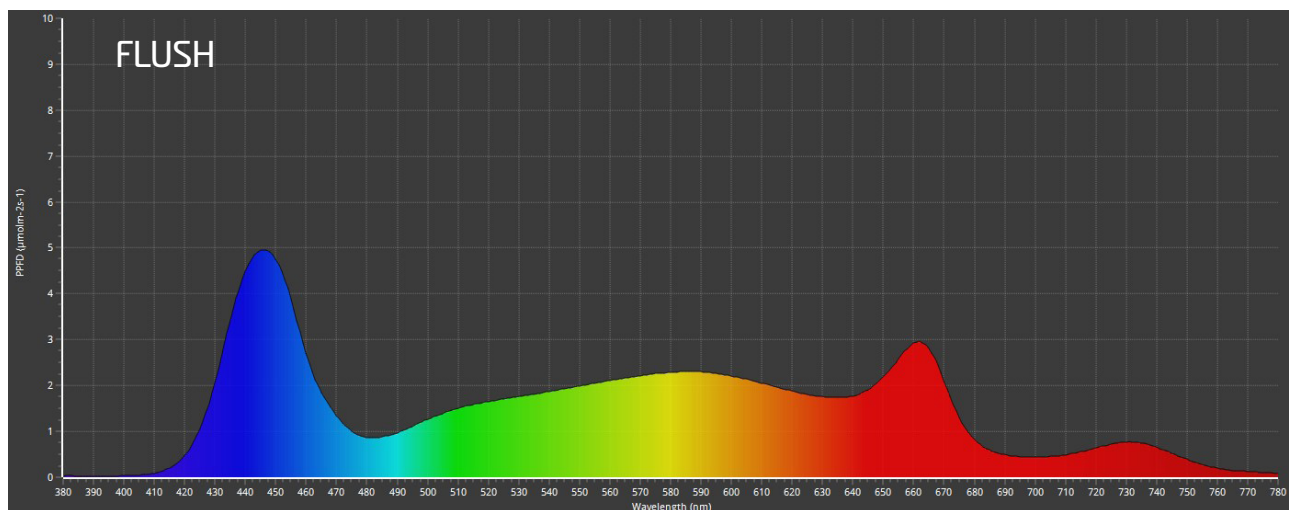
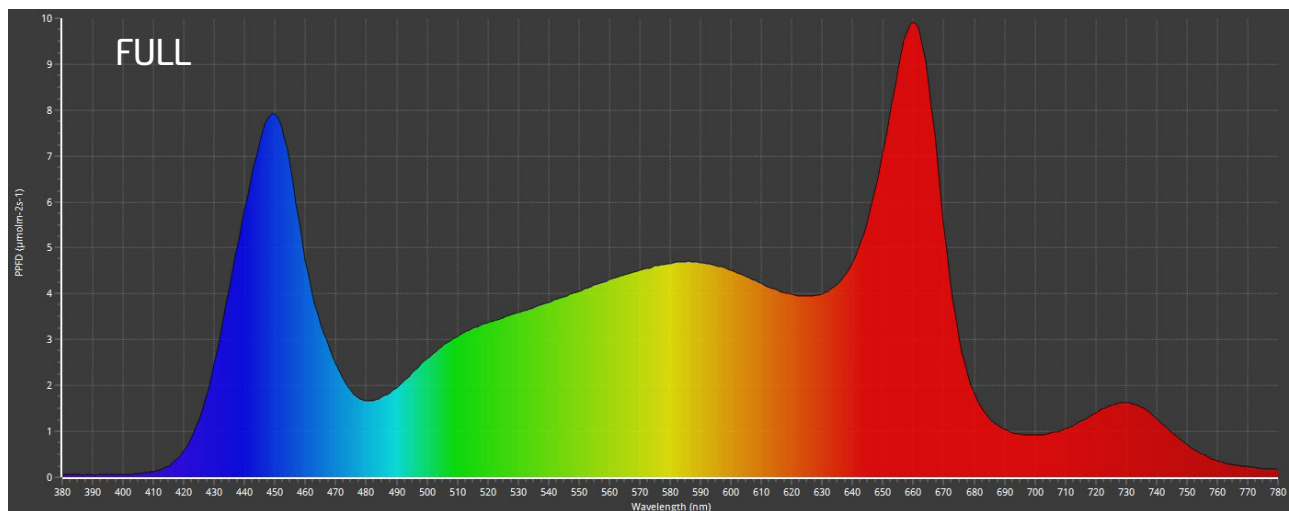
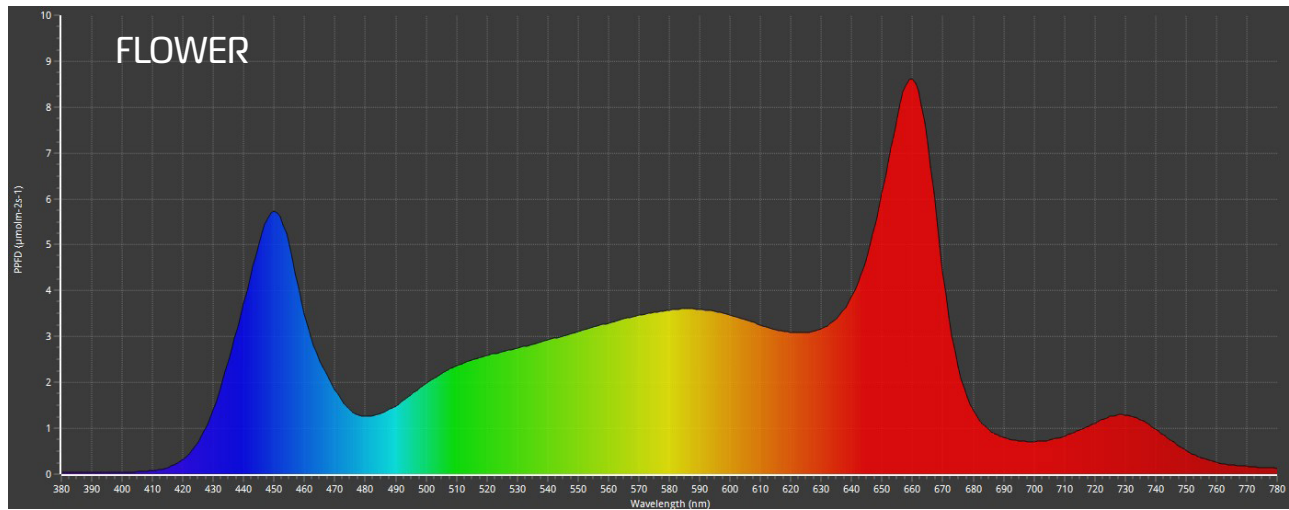
Specifications	
Dimensions	39.75"W x 39.75"L x 4"H
Weight	22.4 lbs
Input Voltage	220 – 277 VAC
Dimming	0-10 V
Certifications	UL 8800 Wet Location, Designed for DLC Certification
Warranty	5 Years, Parts & Labor
Total Flux — PBAR 350-800nm (μmols/s) Includes Far Red	2,536
Flux – PPF 400-700 nm (μmol/s)	2,385
Efficacy — Total (μmole/J)	2.7
Efficacy — PPF (μmole/J)	2.6
Power — Full (Watts)	930
Max Ambient Temperature	40° C

¹ This light produces Far Red Photon Flux which is highly beneficial to flowering plants but is not included in the PPF range of 400-700nm. This makes Total Flux and Efficacy–Total, more meaningful specifications than Flux–PPF and Efficacy–PPF.

BudKicker™-GIP Spectrums



BudKicker™-GIP Spectrums



BudKicker™-GIP Fall Pattern

4' x 8' light intensity grid for the BudKicker™-GIP light at max power 21" from the canopy

542	685	784	815	824	815	784	685	542
621	801	908	939	938	939	908	801	621
687	897	1015	1042	1039	1042	1015	897	687
669	882	1006	1030	1024	1030	1006	882	669
747	974	1106	1139	1138	1139	1106	974	747
772	1004	1142	1176	1173	1176	1142	1004	772
781	1016	1154	1188	1187	1188	1154	1016	781
775	1001	1137	1179	1177	1179	1137	1001	775
763	978	1118	1158	1164	1158	1118	978	763
775	1001	1137	1179	1177	1179	1137	1001	775
781	1016	1154	1188	1187	1188	1154	1016	781
772	1004	1142	1176	1173	1176	1142	1004	772
747	974	1106	1139	1138	1139	1106	974	747
669	882	1006	1030	1024	1030	1006	882	669
687	897	1015	1042	1039	1042	1015	897	687
621	801	908	939	938	939	908	801	621
542	685	784	815	824	815	784	685	542