



New!

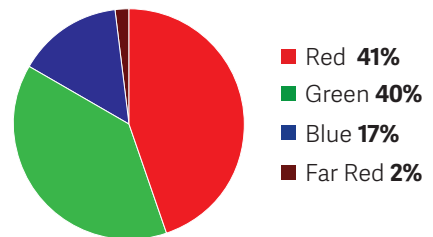
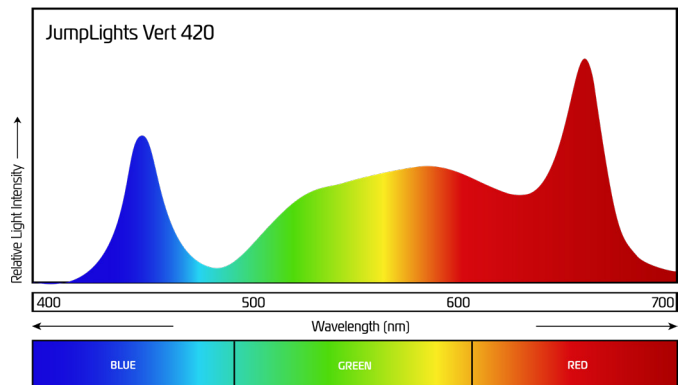
Vert 420

The JumpLights Vert 420 delivers over **1,250 $\mu\text{mol/s}$** of light output, providing powerful light in **single- and multi-tier vegetative rooms**. Assembled and tested in the USA with premium components, it combines strong performance with long-term reliability. Its precision spectrum promotes tight internodal spacing, strong branching, and fast canopy development, laying the groundwork for higher-yield flowering.

Designed for commercial efficiency, the Vert 420 features detachable Sosen drivers and individually replaceable LED bars for simple, on-site maintenance without replacing the entire fixture. Professional-grade performance at an accessible price point makes it a smart investment for growers focused on plant quality and operational efficiency.

PPE
2.82 $\mu\text{mol/J}$

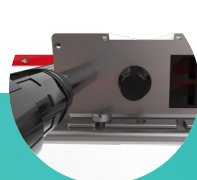
PPF
1,250 $\mu\text{mol/s}$



Efficient Plant Growth
High-quality light output delivers fast, healthy growth without plant stress.



Optimized Spectrum
Spectrum designed to promote tight nodes and strong plant structure.



Built for Veg Rooms
Compact design made for high-density propagation and veg environments.

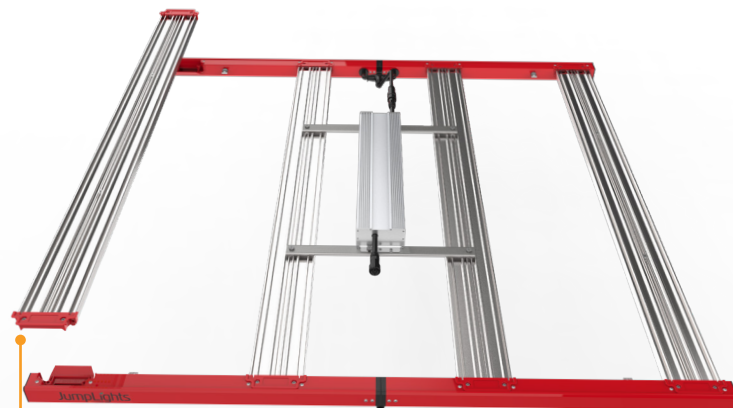


Easy to Service
Modular, field-swappable parts minimize downtime.

Key Benefits

- Veg-optimized spectrum designed to promote tight internodes, strong branching, and rapid canopy development for healthy, high-yielding cannabis plants.
- Efficient light output delivering over 1,250 μmol of total PPF at high efficiency, providing fast vegetative growth without overstressing young plants.
- Wide, uniform coverage optimized for stacked grow racks, ensuring consistent light distribution across trays and plant sites.
- Modular, serviceable design with detachable Sosen drivers and replaceable LED bars to minimize downtime in high-density veg rooms.

Vert 420 Specification	
Model Name	Vert420
Efficiency (PPE)	2.82 $\mu\text{mol}/\text{J}$
Light Output (PPF)	1,250 $\mu\text{mol}/\text{s}$
Spectrum	Full Spectrum - 4D (see graph on front)
Voltage	100-277V AC 50/60 Hz
Power (Watts)	420W \pm 5%
Current (Amps at 277V)	1.5
Total Harmonic Distortion	<20%
Power Factor	0.99
IP Rating/Waterproof rating	IP65
Certifications	ETL, DLC Pending
Max Ambient Operating Temperature	40° C
Lifetime Photon Flux Maintenance L90	>50,000 hours
Lifetime of Driver	>50,000 hours
Warranty	5 Years
Dimensions	43 5/16 inches x 43 5/16 inches x 4 3/4 inches
Total Weight	~ 19.84 lb
Driver Type & Brand	Field Replaceable Sosen LED Driver
Dimming Type	0-10V IEC, Dim to Off
Dimming Connector	M12 Connector, Waterproof
Lighting Scheme and Use Case	Top Light, Sole-Source
Controlled Environment	Indoor stacked and non-stacked

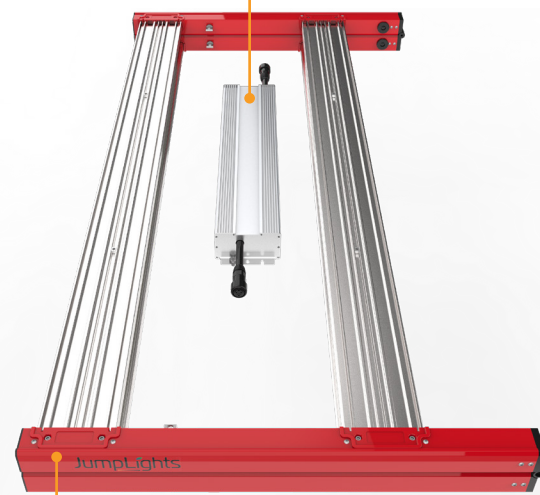


Modular Parts

Field-swappable parts minimize downtime.

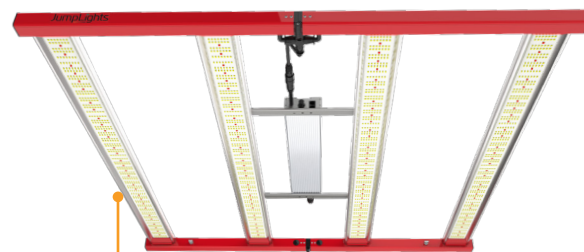
Driver

Detachable, removable drivers



Compact Design

Allows the fixture to collapse in half for easier shipping, storage, and installation in tight grow rooms.



Purpose-Designed

Designed and optimized for multi-tier cultivation setups.

