



New!

# Vert 830

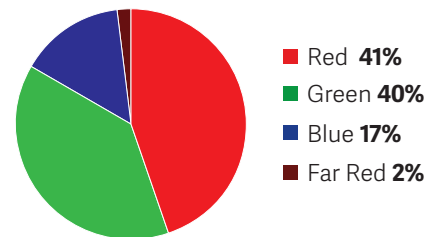
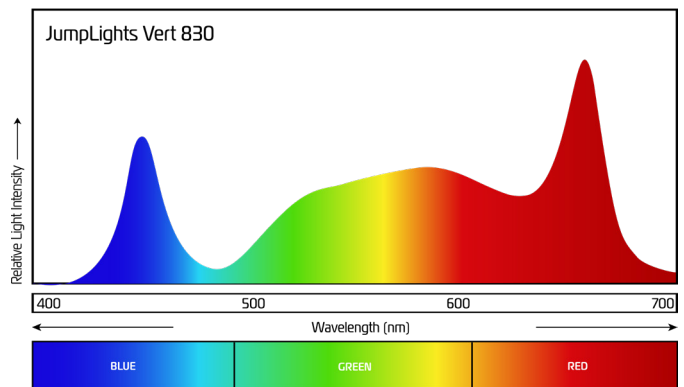
The JumpLights Vert 830 delivers up to **2,460  $\mu\text{mol/s}$**  of light output, giving multi-tier growers the power to **maximize yield**. With high efficiency (2.85  $\mu\text{mol/J}$  PPE) and a balanced spectrum, it drives strong biomass production while reducing the risk of photobleaching, providing high intensity without compromising crop quality.

Designed for longevity and efficiency, the Vert 830 is built with premium components, low LED operating temperatures, and a modular architecture featuring detachable Sosen drivers and replaceable LED bars for easy on-site service and minimal downtime.

Pair it with the JumpLights Catalyst Pro under-canopy light to create a fully integrated system engineered to maximize flower quality and total harvest weight.

**PPE**  
2.85  $\mu\text{mol/J}$

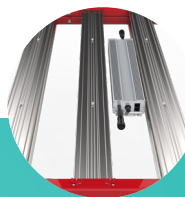
**PPF**  
2,460  $\mu\text{mol/s}$



**High Light Output**  
Over 2,460  $\mu\text{mol}$  of total PPF for full 4x4 canopy coverage.



**Optimized Spectrum**  
Balanced, low-red spectrum designed for strong flowering and high efficiency.



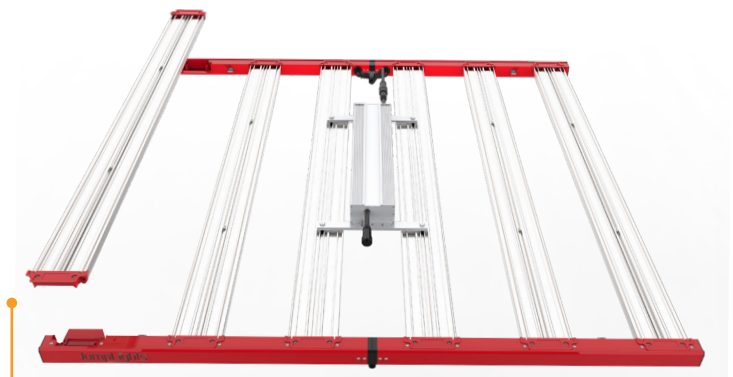
**Built to Last**  
Rugged construction and thermal design for long-term reliability.



**Easy to Service**  
Modular, field-swappable parts minimize downtime.

## Key Benefits

- Rugged construction built with high-quality materials to ensure long-term performance and reliable operation.
- Modular, serviceable design with multi-step factory quality control and field-swappable components to minimize downtime and simplify maintenance.
- High-intensity light output delivering over 2,460  $\mu\text{mol}$  of total PPF across a full 4x4 canopy for uniform, high-yield flowering.
- Balanced, low-red spectrum optimized for cannabis flowering, providing high efficiency and strong bud development without photobleaching.



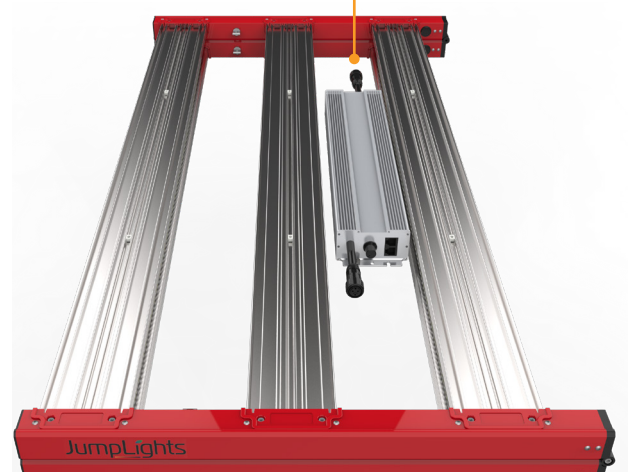
### Modular Parts

Field-swappable parts minimize downtime.

### Driver

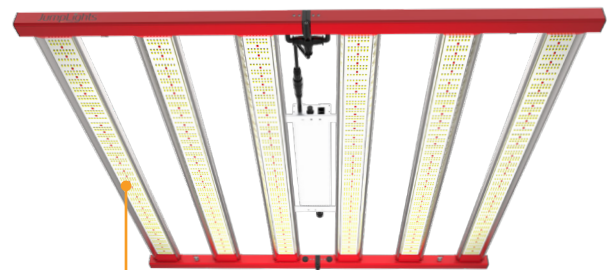
Detachable, removable drivers

Vert 830 Specification	
Model Name	Vert830
Efficiency (PPE)	2.85 $\mu\text{mol}/\text{J}$
Light Output (PPF)	2,460 $\mu\text{mol}/\text{s}$
Spectrum	Full Spectrum - 4D (see graph on front)
Voltage	100-277V AC 50/60 Hz
Power (Watts)	830W $\pm 5\%$
Current (Amps at 277V)	3.0
Total Harmonic Distortion	<20%
Power Factor	0.99
IP Rating/Waterproof rating	IP65
Certifications	ETL, DLC Pending
Max Ambient Operating Temperature	40° C
Lifetime Photon Flux Maintenance L90	>50,000 hours
Lifetime of Driver	>50,000 hours
Warranty	5 Years
Dimensions	43 5/16 inches x 43 5/16 inches x 4 3/4 inches
Total Weight	~ 29.76 lb
Driver Type & Brand	Field Replaceable Sosen LED Driver
Dimming Type	0-10V IEC, Dim to Off
Dimming Connector	M12 Connector, Waterproof
Lighting Scheme and Use Case	Top Light, Sole-Source
Controlled Environment	Indoor stacked and non-stacked



### Compact Design

Allows the fixture to collapse in half for easier shipping, storage, and installation in tight grow rooms.



### Purpose-Designed

Designed and optimized for multi-tier cultivation setups.